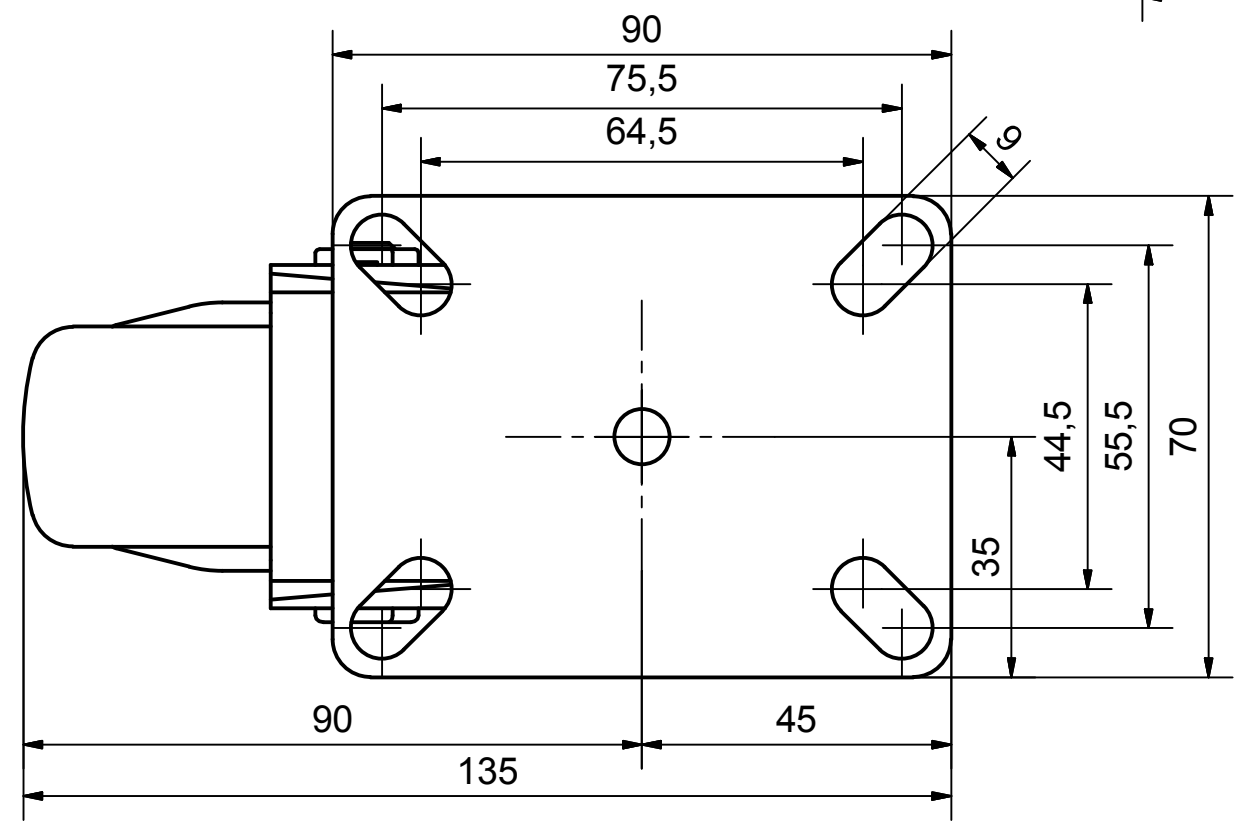



**Load Capacity: 90kg, for speed up to 4km/h
(According to EN 12530)**



 PRODUCTION OF INSTITUTIONAL CASTORS AND WHEELS THESSALONIKI - GREECE	PERMIS. VARIATIONS:		PART No:	
	SURFACE FINISH:		UNF . DIM.:	
This drawing is the property of RODA S.A. It must neither be reproduced in any manner nor shall it be submitted to third parties or competitors without our written consent			PART NAME : S.100.TPS.TSGP	
DESIGNED	22/7/2013	E.POLIMEROPOULOU	PART DESCRIPTION : Swivel castor, steel support, top plate fitting.Wheel 100x32mm,non marking grey rubber (82shA) single precision bearing,plastic	
DRAWN	22/7/2013	E.POLIMEROPOULOU		
CHECKED	22/7/2013	H.SAATSOGLOU		
C3			QUANTITY	SCALE
B2			REPLACE :	GEN. DWG. NUM. :
A1				
A/A				
			DRAWING NUMBER :	SHEET No.