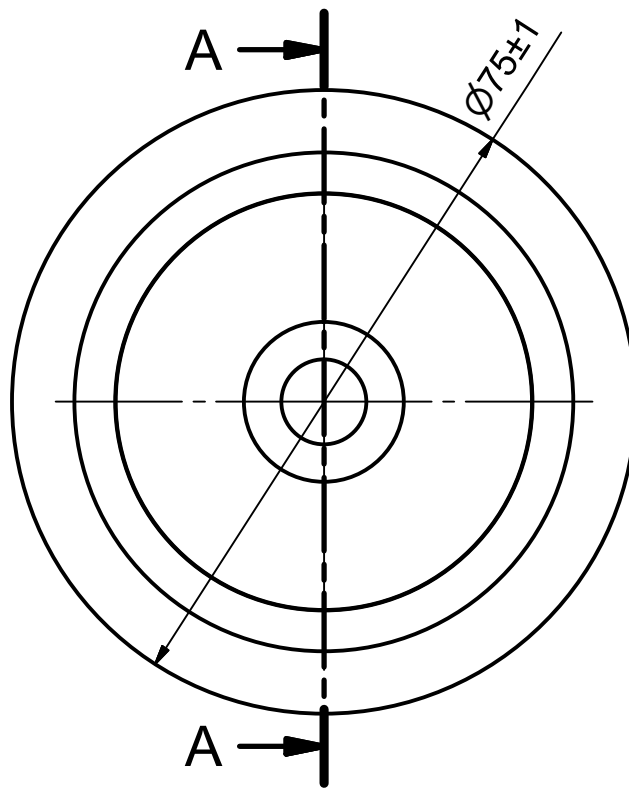
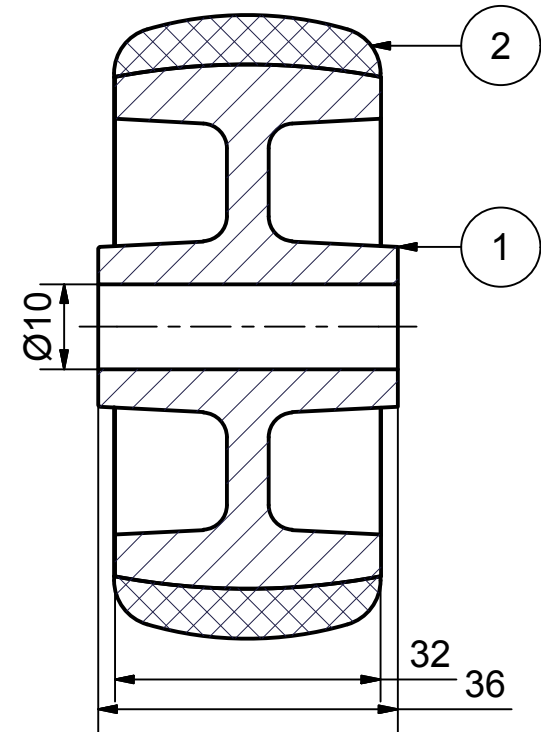





**Load Capacity: 70kg
for speed up to 4km/h
(According to EN 12530)**



SECTION A-A'



Parts List

ITEM	DESCRIPTION	MATERIAL	QTY	MASS
1	Wheel Rim 075S.EC	PP Electroconductive	1	0,052 kg
2	Wheel Tread 075S.EC	TPA+Steel Fibers	1	0,034 kg
 PRODUCTION OF INSTITUTIONAL CASTORS AND WHEELS THESSALONIKI - GREECE		PERMIS. VARIATIONS:		PART No:
		SURFACE FINISH :		UNF . DIM.:
		PART NAME : WL-TPA075S.EC		
This drawing is the property of RODA S.A. It must neither be reproduced in any manner nor shall it be submitted to third parties or competitors without our written consent		DESIGNED	8/11/2013	E.POLIMEROPOULOU
		DRAWN	8/11/2013	E.POLIMEROPOULOU
		CHECKED	8/11/2013	H.SAATSOGLOU
		PART DESCRIPTION : Wheel 75x32mm,electric conductive non marking grey rubber (82shA),bore diameter 10mm , plain bearing		
C3				DRAWING NUMBER :
B2				
A1				SHEET No.
A/A				
		QUANTITY	SCALE	
		REPLACE :	GEN. DWG. NUM. :	